

# Electra Glide/Ultra/Road Glide Road King/Street Glide/Tri-Glide 2009 to 2013 models

## TOUR PACK RELOCATION PLATE KIT

### Installation kit

Relocation plate = 1 pc

Screws ¼”-20 c/s flat head x ¾” long = 4 pcs

Nuts ¼”-20 Nyloc nuts = 4 pcs

Washers ¼” = 4 pcs

### **Removal of Tour pack**

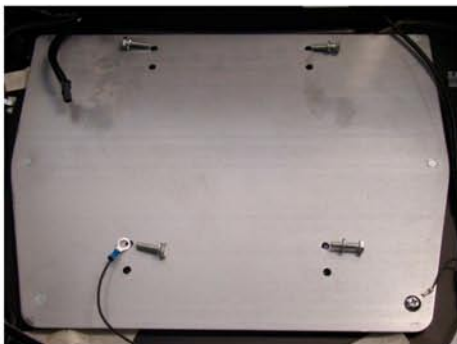
1. If you have a trunk liner remove it (**pic # 1**) two nuts inside pouch
2. Remove the four screws in the trunk floor holding the tour pack to the frame (**pic # 2**)
3. Check the wiring for enough length to move the trunk back 2 inches.
4. Lift the trunk (**pic # 3**) and install the relocation plate with the 4 supplied c/s head screws (**pic # 4**)
5. Lower the trunk and install the 4 original screws through the plate and install the **four supplied nyloc nuts and washers under the trunk to secure the trunk to the relocation plate.**



pic # 1



pic # 3



pic # 2



pic # 4

Questions ??? call us on 1-877-672 0288  
or email [des@ultimateseats.ca](mailto:des@ultimateseats.ca)  
Web site – [www.ultimateseats.ca](http://www.ultimateseats.ca)